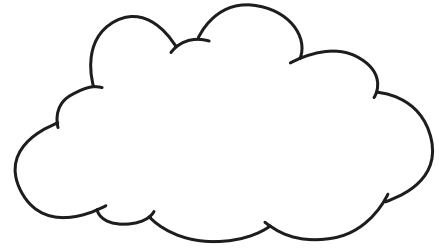
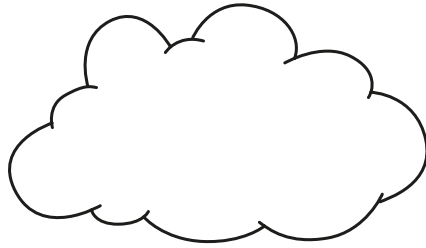
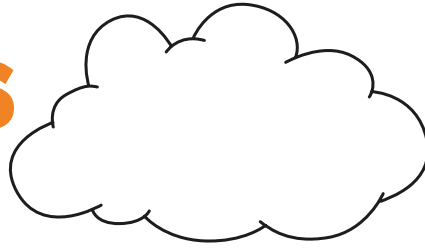


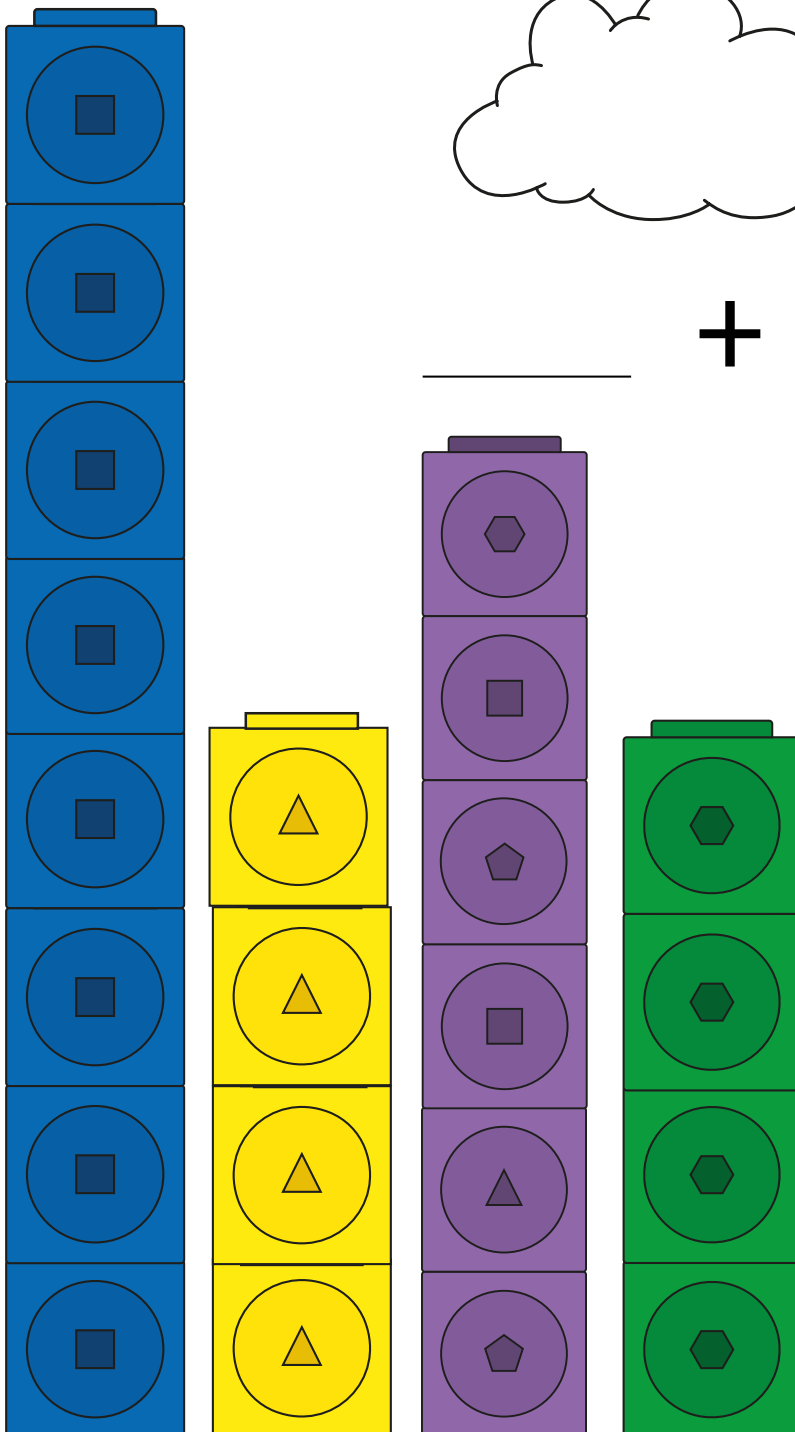
MathLink® Fiches

d'activités



+

=



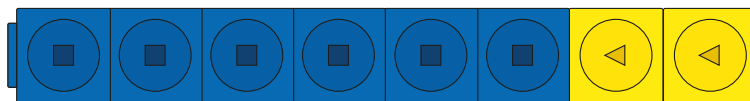
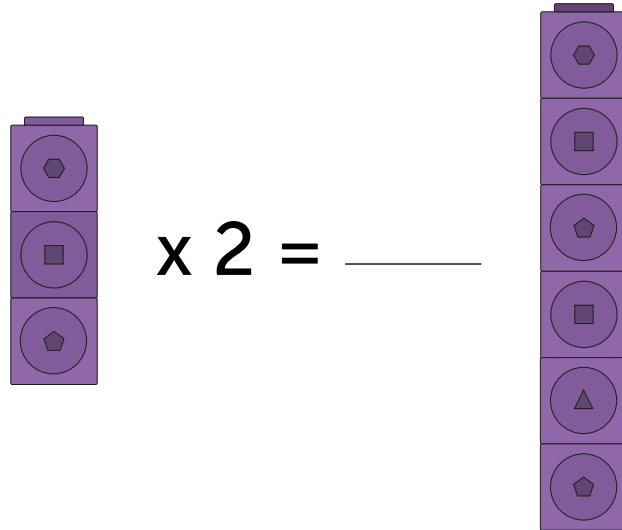
Addition,
soustraction, division
et multiplication

Ans 3 - 8

MathLink® Activité 1

Ans 3 - 8

Addition, soustraction, division et multiplication



$$\underline{\hspace{2cm}} + \underline{\hspace{2cm}} = \underline{\hspace{2cm}}$$

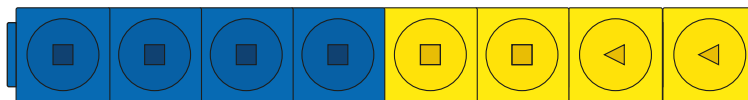
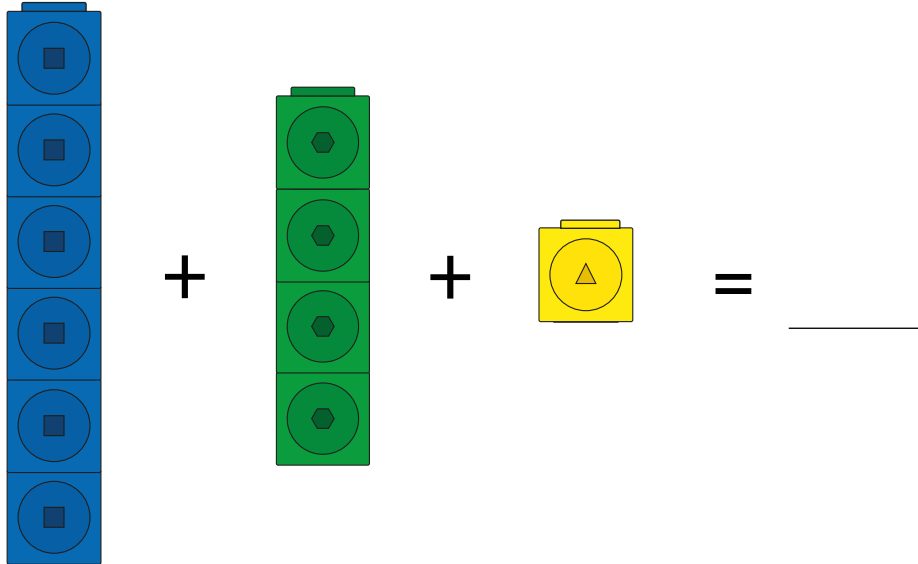


$$\underline{\hspace{2cm}} = 10 - \underline{\hspace{2cm}}$$

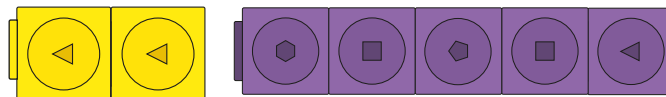
MathLink® Activité 2

Ans 3 - 8

Addition, soustraction, division et multiplication



$$8 - \underline{\quad} = \underline{\quad}$$



$$\underline{\quad} + \underline{\quad} = \underline{\quad}$$

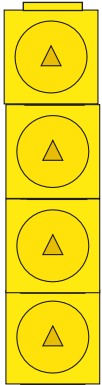
MathLink® Activité 3

Ages 3 - 8

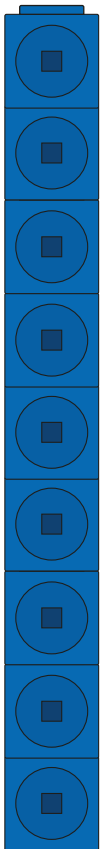
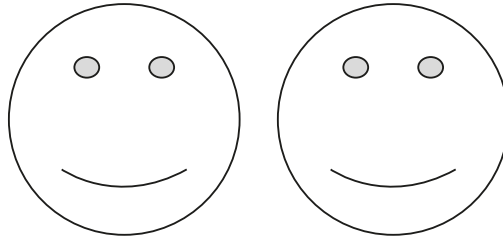
Division

Voyez combien de cubes vous pourriez diviser en les plaçant dans les images

(Pas de cubes ? - utiliser des objets de la maison comme des morceaux de pâtes séchées, des bouchons de bouteilles, etc.)



÷



÷

